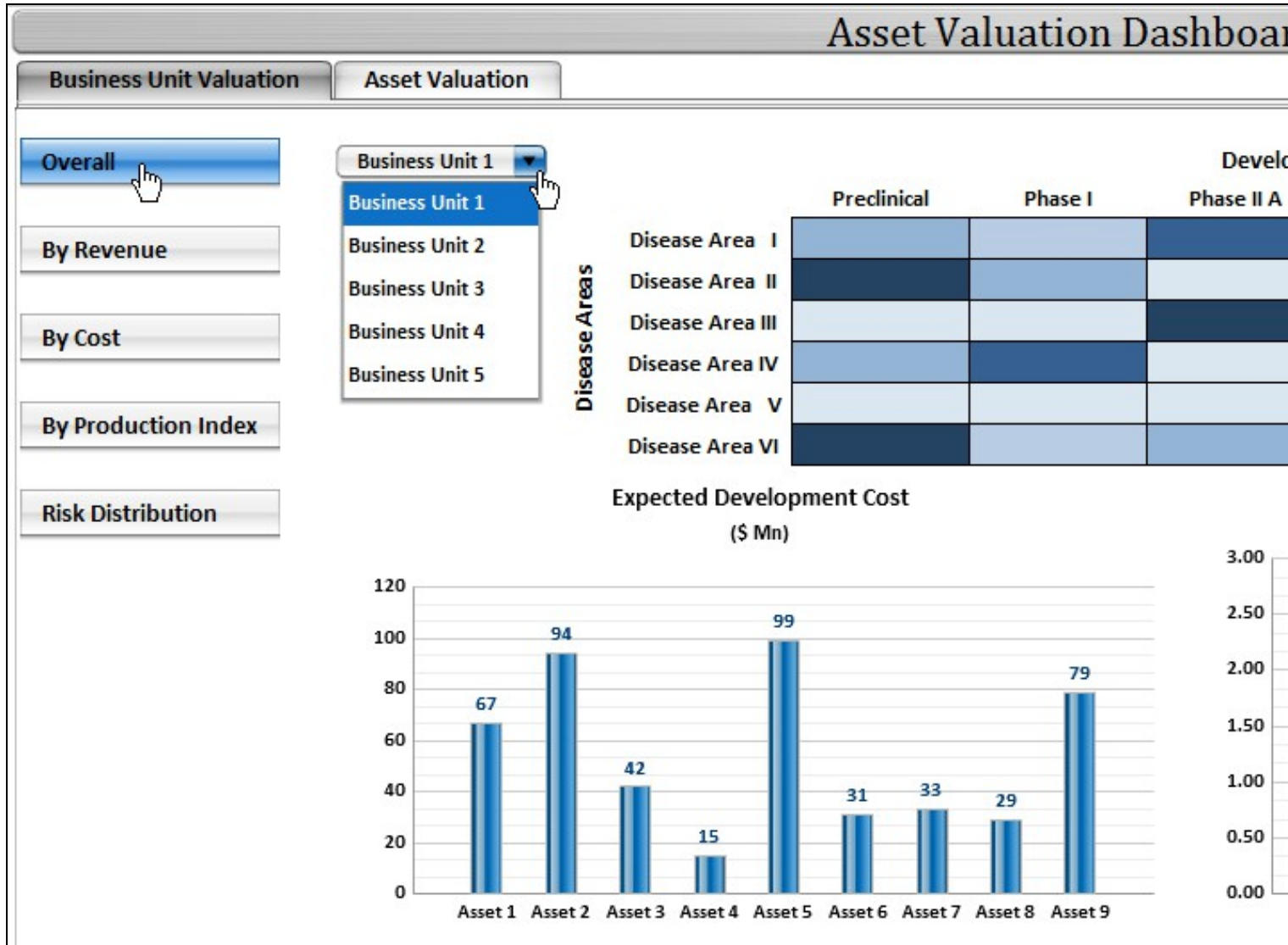


Asset Valuation Dashboard

Sample Dashboard

- The sample dashboard contains various options to view the data - Overall data, By Revenue, By Cost, By Productivity Index and by Risk Distribution
- The sample dashboard contains Overall information which is a heat map. The Business Unit has to be selected in order to get the heat map for Development Phase vs Diseases (in that Business Unit)
- The Heat in the heat map represents the number of assets (drugs) in that Development stage for that disease
- When the user clicks on one of them, they get charts depicting the expected development cost and the productivity index for all the drugs in that development phase for that disease



- The next dashboard depicts the heat map with the heat being Expected Revenue from that Development phase and Disease
- When the user clicks on any of them, they get the break up of expected revenue, drugwise and its geographical split

The following dashboard depicts the Revenue-wise heatmap

Asset Valuation Dashboard

Business Unit Valuation

Asset Valuation

Overall

Business Unit 1

By Revenue

Business Unit 1

By Cost

Business Unit 2

By Production Index

Business Unit 3

Risk Distribution

Business Unit 4

Business Unit 5

Disease Areas

Disease Area I
Disease Area II
Disease Area III
Disease Area IV
Disease Area V
Disease Area VI

Preclinical

Phase I

Developmental
Phase II A

	Preclinical	Phase I	Phase II A
Disease Area I	Light Green	Light Green	Dark Green
Disease Area II	Dark Green	Light Green	Light Green
Disease Area III	Light Green	Light Green	Dark Green
Disease Area IV	Light Green	Dark Green	Light Green
Disease Area V	Light Green	Light Green	Light Green
Disease Area VI	Dark Green	Light Green	Light Green

Expected Revenue (\$ Mn)



Asset 1

Percentage

- Heat maps can be made similarly for other labels as well
- The next dashboard depicts the valuation indicators for each asset
- To arrive at each asset, the user has to select the respective Business Unit, Development Phase and Disease

The following dashboard depicts the valuation for each asset

Business Unit Valuation

Asset Valuation

Business Unit

Disease

Business Unit 3

Disease 5

Asset 1

Asset 2

Asset 3

Asset 4

Asset 5

Asset 6

Asset 7

Asset 8

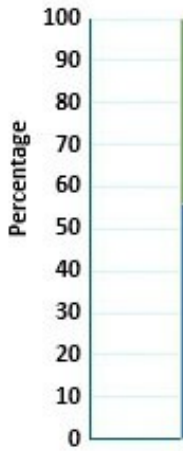
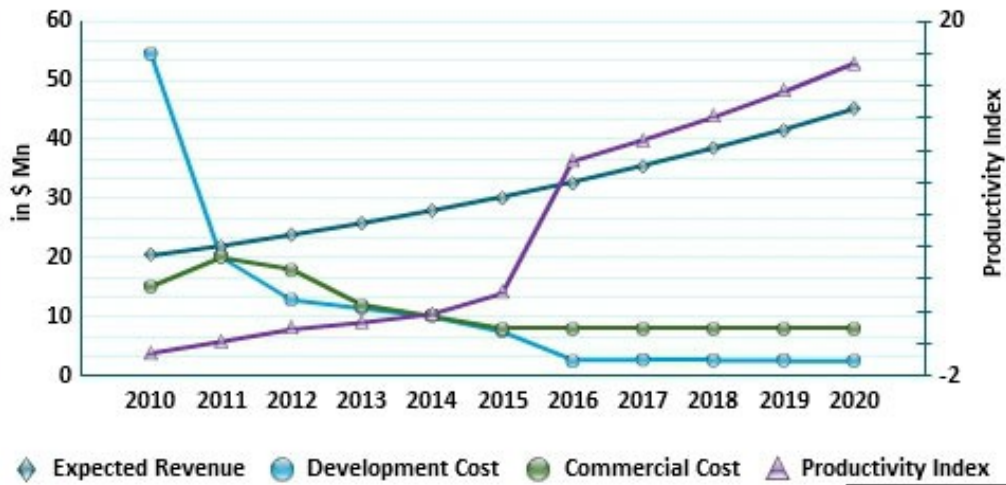
Asset 9

Asset 10

Asset 11

DRUG DASHBOARD - ASSET 1

Asset 1 - Expected Yearwise Revenue (\$ Mn)



Other Details - Asset 1

Active Phase	Phase III
Phase Cost	\$18 Mn
Phase Duration	1 year
Phase Risk Factor	0.72
Royalty Payments	-

