

Automotive Dashboard Screenshots

Key aspects of the Automotive Dashboard

The screenshot displays the Dolcera Dynamic Dashboard interface. The top header features the Dolcera logo and the text "Dolcera Dynamic Dashboard" on the left, and "ALLOWS US TO FILTER" on the right. The main content area is divided into two sections: "Updates" on the left and "Summary Information - Initial data load" on the right.

Updates Section: A vertical list contains "All Items", "Initial data load" (highlighted in blue), and "Data update". A callout box points to this section with the text: "THIS SECTION CONTAINS UPDATES MADE TO THE CONTENTS OF THE DASHBOARD AT ALL PRE-DEFINED TIME INTERVALS".

Summary Information - Initial data load Section: A table displays data for two categories:

Information Area	Total (Ours)	US Grant
Automotive Engines - Demo	370 (0)	0 (0)
Automotive Windshields - Demo	42 (0)	0 (0)

Arrows from the callout box point to the "Initial data load" item and the "Automotive Engines - Demo" row. Another arrow points from the "Automotive Windshields - Demo" row to the text: "Exports patent data to a downloadable excel sheet".

Large Text: The words "FIRST PAGE" are displayed in large, bold, black letters across the bottom right of the dashboard area.



Data Filters

Car Engine (370)

- Fuel Filter (1)
- Exhaust Processing (59)
- Valves (5)
- Heating Circuit (1)
- Mounting and Attaching (7)
- Ignition Control (23)
- Throttle (3)
- Design (0)
- Cooling (32)
- Air-Fuel Control (63)

**THIS SECTION
ALLOWS US TO
FILTER DATA
INTO VARIOUS
CATEGORIES**

ALL COMPANIES (370)

- Audi Nsu Auto Union Ag (3)
- Bayerische Motoren Werke Ag (1)
- Daihatsu Motor Co. (10)
- Daimler Benz Ag (1)
- Daimler Chrysler Ag (6)
- Denso Corp (8)
- Ford Global Tech (1)
- Ford Motor (1)
- Hitachi (29)
- Honda Motor Co Ltd (50)
- Isuzu Motors Ltd (1)

No Date Filter

All Patent Types

All Tags

Information

Patent Charts

Patents

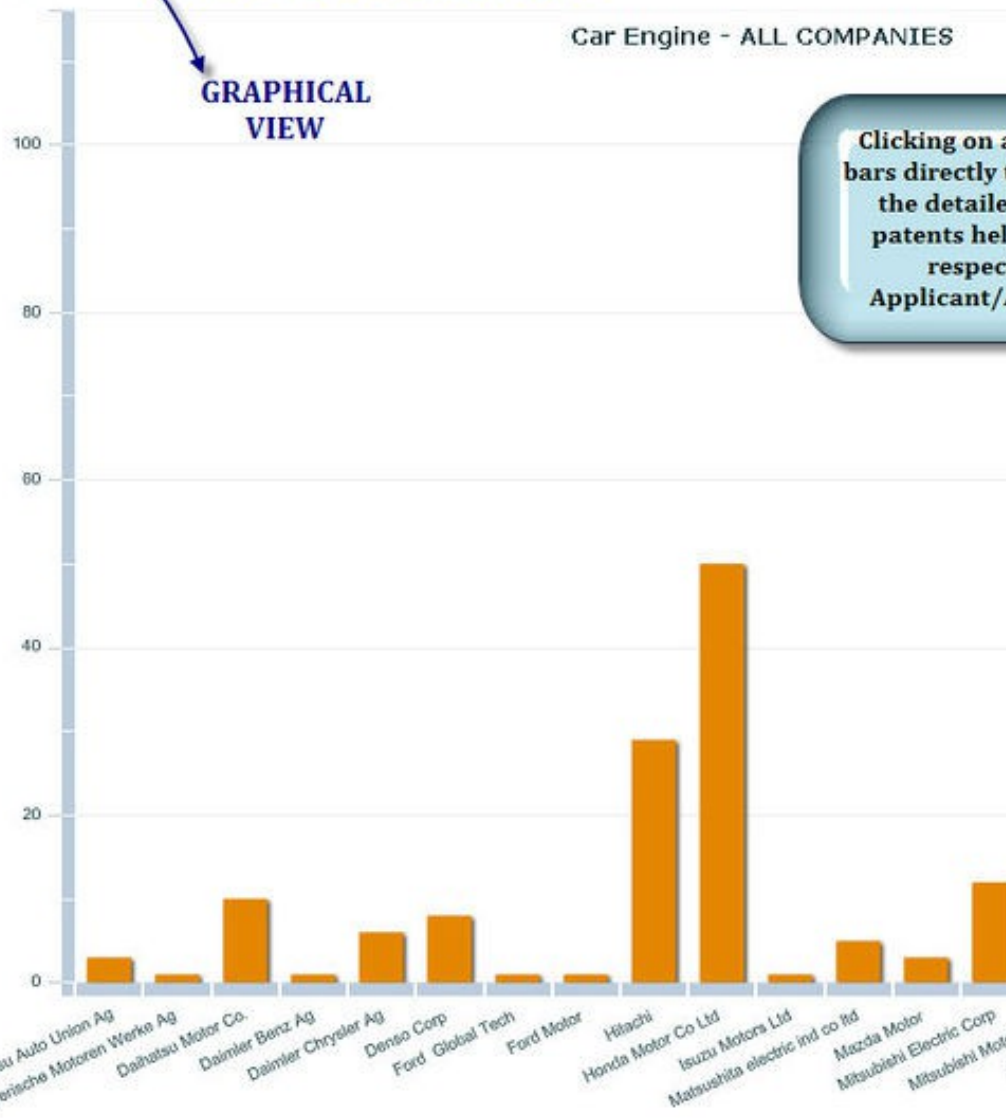


Company Statistics

Timeline by Pub Year

Timeline by App Year

Car Engine - ALL COMPANIES



Clicking on a bar directly leads to the detailed view of the patents held by that respective Applicant/



Data Filters

- Car Engine (370)
 - Fuel Filter (1)
 - Exhaust Processing (59)
 - Valves (5)
 - Heating Circuit (1)
 - Mounting and Attaching (7)
 - Ignition Control (23)
 - Throttle (3)
 - Design (0)
 - Cooling (32)
 - Air-Fuel Control (63)

- Matsushita electric ind co ltd (5)
- Mazda Motor (3)
- Mitsubishi Electric Corp (12)
- Mitsubishi Motors Corp (14)
- Nippon Group Ltd (19)
- Nissan Motor (51)
- Robert Bosch Gmbh (10)
- Suzuki Motor Co. (27)
- Toyota (115)**
- Volkswagen Ag (1)
- Yamaha Motor Co Ltd (2)

No Date Filter

All Patent Types

All Tags

Information

Patent Charts

Patents

1

DETAILED LIST VIEW

Publication	Title
JP58107822A	Air-fuel ratio control method of internal-combustion engine for car
JP58126446A	Deceleration control method of internal-combustion engine
EP0182034A1	Piston for internal combustion engine
CA1244263A1	Crank damper pulley structure for the internal combustion engine of a car
EP0182034B1	Piston for internal combustion engine
EP0811757A2	An apparatus for controlling auxiliary equipment driven by an internal combustion engine
EP0811757A3	An apparatus for controlling auxiliary equipment driven by an internal combustion engine
EP0859132A1	Exhaust emission control apparatus for internal combustion engine
EP0921288A1	Internal combustion engine having combustion heater
CA2262128A1	Internal combustion engine having combustion heater
EP0939210A2	Internal combustion engine having combustion heater
EP0939210A3	Internal combustion engine having combustion heater
EP0859132A4	Exhaust emission control apparatus for internal combustion engine
EP1013903A2	Exhaust emission control system of hybrid car
EP1013903A3	Exhaust emission control system of hybrid car
EP0811757B1	An apparatus for controlling auxiliary equipment driven by an internal combustion engine
EP0859132B1	Exhaust emission control apparatus for internal combustion engine
CA2262128C	Internal combustion engine having combustion heater
EP1013903B1	Exhaust emission control system of hybrid car
EP0939210B1	Internal combustion engine having combustion heater
EP0921288B1	Internal combustion engine having combustion heater

EP0939210A3

Internal combustion engine having combustion heater

Claims:
null

US Class (primary): null

IPC Class (primary): F01P00320

Abstract:

Disclosed is an internal combustion engine having a combustion heater of

EP0939210A3

Rating:

—

Tags:



Data Filters

- Car Engine (370)
 - Fuel Filter (1)
 - Exhaust Processing (59)
 - Valves (5)
 - Heating Circuit (1)
 - Mounting and Attaching (7)
 - Ignition Control (23)
 - Throttle (3)
 - Design (0)
 - Cooling (32)
 - Air-Fuel Control (63)

- Matsushita electric ind co ltd (5)
- Mazda Motor (3)
- Mitsubishi Electric Corp (12)
- Mitsubishi Motors Corp (14)
- Nippon Group Ltd (19)
- Nissan Motor (51)
- Robert Bosch Gmbh (10)
- Suzuki Motor Co. (27)
- Toyota (115)**
- Volkswagen Ag (1)
- Yamaha Motor Co Ltd (2)

No Date Filter

All Patent Types

All Tags

Information

Patent Charts Patents

Publication	Title
JP580255204	Air-to-fuel ratio control device for internal combustion engine
JP580388	
JP580659	
JP580659	
JP580884	
JP581012	
JP581076	
JP581264	
EP01820	
CA12442	
EP01820	
EP08117	
EP08117	
EP08591	
EP09212	
CA22621	
EP09392	Internal combustion engine having combustion heater
EP09392	
EP08591	
EP10139	
EP10139	

JP52092019
AUXILIARY

US Class (p
IPC Class (p

Abstract:
PURPOSE: To

JP5209201

**PULLS UP
THE FIRST
PAGE OF
EACH PATENT
DOCUMENT**


 Europaisches Patentamt
 European Patent Office
 Office européen des brevets

(15)

(12) EUROPEAN PATENT APPLICATION

(43) Date of publication: 01.03.1996 Bulletin 1390/96 (51) Int. Cl. F02D 41/00

(21) Application number: 95102411.0 (22) Date of filing: 06.02.1995

(84) Designated Contracting States: AT BE CH CY DE DK ES FI FR GB GR IE IT LI LU MC NL PT SE Designated Extension States: AL LT LV MK RO SI

(72) Inventor: Makoto Suzuki
Toyota Jidosha Kaisha, Ltd.
Toyota-shi, Aichi

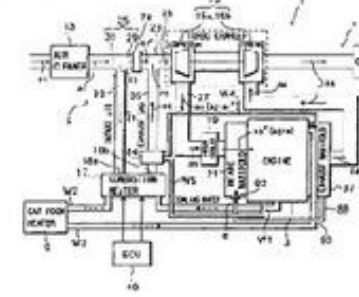
(74) Representative: Pöschmann, H. & Partner
Tiedje-COR
Bavenering 30196 München

(31) Priority: 27.10.1994 JP 6340296 (05.06.1995 JP 22214758)

(71) Applicant: TOYOTA JIDOSHA KABUSHIKI KAISHA
Aichi-ken 471-8571 (JP)

(54) Internal combustion engine having combustion heater

(57) Disclosed is an internal combustion engine having a combustion heater of a type of introducing a combustion gas into an intake system, in which an air/fuel ratio is delivered from becoming rich, and HC, CO and particulate matters are to be reduced even when the internal combustion engine is combined with an SCR device. The internal combustion engine has the combustion heater provided in an intake system for speeding up warm-up of the internal combustion engine and enhancing a performance of a car room heater by guiding the combustion gas emitted from the combustor to an intake system.



EP 0 939 210 A2

Data Filters

- ▼ Car Engine (370)
 - Folder Fuel Filter (1)
 - Folder Exhaust Processing (59)
 - Folder Valves (5)
 - Folder Heating Circuit (1)
 - Folder Mounting and Attaching (7)
 - Folder Ignition Control (23)
 - Folder Throttle (3)
 - ▶ Folder Design (0)
 - Folder Cooling (32)
 - ▶ Folder Air-Fuel Control (63)

- Matsushita electric ind co ltd (5)
- Mazda Motor (3)
- Mitsubishi Electric Corp (12)
- Mitsubishi Motors Corp (14)
- Nippon Group Ltd (19)
- Nissan Motor (51)
- Robert Bosch Gmbh (10)
- Suzuki Motor Co. (27)
- Toyota (115)**
- Volkswagen Ag (1)
- Yamaha Motor Co Ltd (2)

- No Date Filter ▼
- All Patent Types ▼
- All Tags ▼

Information

Patent Charts Patents ⓘ

Publication	Title
JP58107822A	Air-fuel ratio control method of internal-combustion engine for car
JP58126446A	Deceleration control method of internal-combustion engine
EP0182034A1	Piston for internal combustion engine
CA1244263A1	Crank damper pulley structure for the internal combustion engine of a car
EP0182034B1	Piston for internal combustion engine
EP0811757A2	An apparatus for controlling auxiliary equipment driven by an internal combustion engine
EP0811757A3	An apparatus for controlling auxiliary equipment driven by an internal combustion engine
EP0859132A1	Exhaust emission control apparatus for internal combustion engine
EP0921288A1	Internal combustion engine having combustion heater
CA2262128A1	Internal combustion engine having combustion heater
EP0939210A2	Internal combustion engine having combustion heater
EP0939210A3	Internal combustion engine having combustion heater
EP0859132A4	Exhaust emission control apparatus for internal combustion engine
EP1013903A2	Exhaust emission control system of hybrid car
EP1013903A3	Exhaust emission control system of hybrid car
EP0811757B1	An apparatus for controlling auxiliary equipment driven by an internal combustion engine
EP0859132B1	Exhaust emission control apparatus for internal combustion engine
CA2262128C	Internal combustion engine having combustion heater
EP1013903B1	Exhaust emission control system of hybrid car
EP0939210B1	Internal combustion engine having combustion heater
EP0921288B1	Internal combustion engine having combustion heater

EP0939210A3
Internal combustion engine having combustion heater

US Class (primary): null
 IPC Class (primary): F01P00320

Abstract:
 Disclosed is an internal combustion engine having a combustion heater of

Claims:
 null

Rating Feature

- 1
- 2
- 3

EP0939210A3 Rating: 1 Tags:



Data Filters

- Car Engine (370)
 - Fuel Filter (1)
 - Exhaust Processing (59)
 - Valves (5)
 - Heating Circuit (1)
 - Mounting and Attaching (7)
 - Ignition Control (23)
 - Throttle (3)
 - Design (0)
 - Cooling (32)
 - Air-Fuel Control (63)

ALL COMPANIES (370)

- Audi Nsu Auto Union Ag (3)
- Bayerische Motoren Werke Ag (1)
- Daihatsu Motor Co. (10)
- Daimler Benz Ag (1)
- Daimler Chrysler Ag (6)
- Denso Corp (8)
- Ford Global Tech (1)
- Ford Motor (1)
- Hitachi (29)

All Tags

- hjji
- peter**
- imp

peter

Information

Patent Charts

Patents



Publication	Title
JP52001825A	Method of operation of car engine

**PULLS UP THE DOCUMENT
TAGGED "peter"**

Tagging
Feature

JP52001825A
METHOD OF OPERATION OF CAR ENGINE

US Class (primary): null
IPC Class (primary): B60K03100

Abstract:
PURPOSE: Method of operation of car engine, utilizing characteristics of

Claims:
null

JP52001825A Rating: 3 Tags: peter

