

- Step 1: Creating Project Space on Wiki
 - Advantages of wiki system
- Step 2: Background Study
- Step 3: Searching
 - Dolcera Patent Search Template
 - Building Search History
- Step 4: Analysis & Presentation
 - Analysis & Presentation
 - Marking in pdf documents
- Step 5: Reporting
- Prior Art Search Process



Creating secure client & project space on Dolcera wiki

Space for Client Name & Logo



New secure space for new clients



For existing clients – New secure page in existing secure space

- Ensure secure handling of confidential information
- Client can check project status, progress from day 1
- Client can provide quick feedback at any point of time during execution
- Multi format data can be integrated in single wiki format
- .doc, .xls, .ppt etc type files of any size can upload/download to/from wiki system
- Avoid email traffic

Dolcera team does the following task:

- Understand technology by background study process
 - Study source: Web search, scientific literature, wikipedia
- Identify novelty of the invention
- Identify inventive steps on the invention
- Validate internally both novelty & inventive step with vertical heads
- Publish novelty & inventive steps on wiki for client validation along with question if any

Patent & non-patent search

- Identify keywords from
 - Client's invention
 - Background study
- Identify IPC, US, ECLA and F-Term codes from
 - Preliminary patent search
 - IPC, US, ECLA and F-Term class study

- Generating patent search template
- Building search logic & search history
- Getting validated by vertical head
- Publishing on client wiki for comments

Concepts	Keywords 1	Keywords 2	US Code	IPC	ECLA	F-Term	Assignee	Control Patent
1	Melanoma	IFN*	4240854	C07K001452	A61K003819	4H045	Abbott	US7551163B1
2	Skin NEAR3 (cancer)	*IFN	4242811	A61K003819	A61K003821	DA15	Medtronic	US7539738B2
3	carcinoma	Interferon*	42400141	A61K003821	A61K38/21A	DA16	Ranbaxy	US7539293B2
4	tumor	*interferon	514889		C07K001452	DA17	Clorox	US7530285B2
5		huIFN	930142		C07K001456	DA18	Unilever	US7537008B2

Search date: 14 Sept, 2006

Database: Micropatent (PatSearch Fulltext)

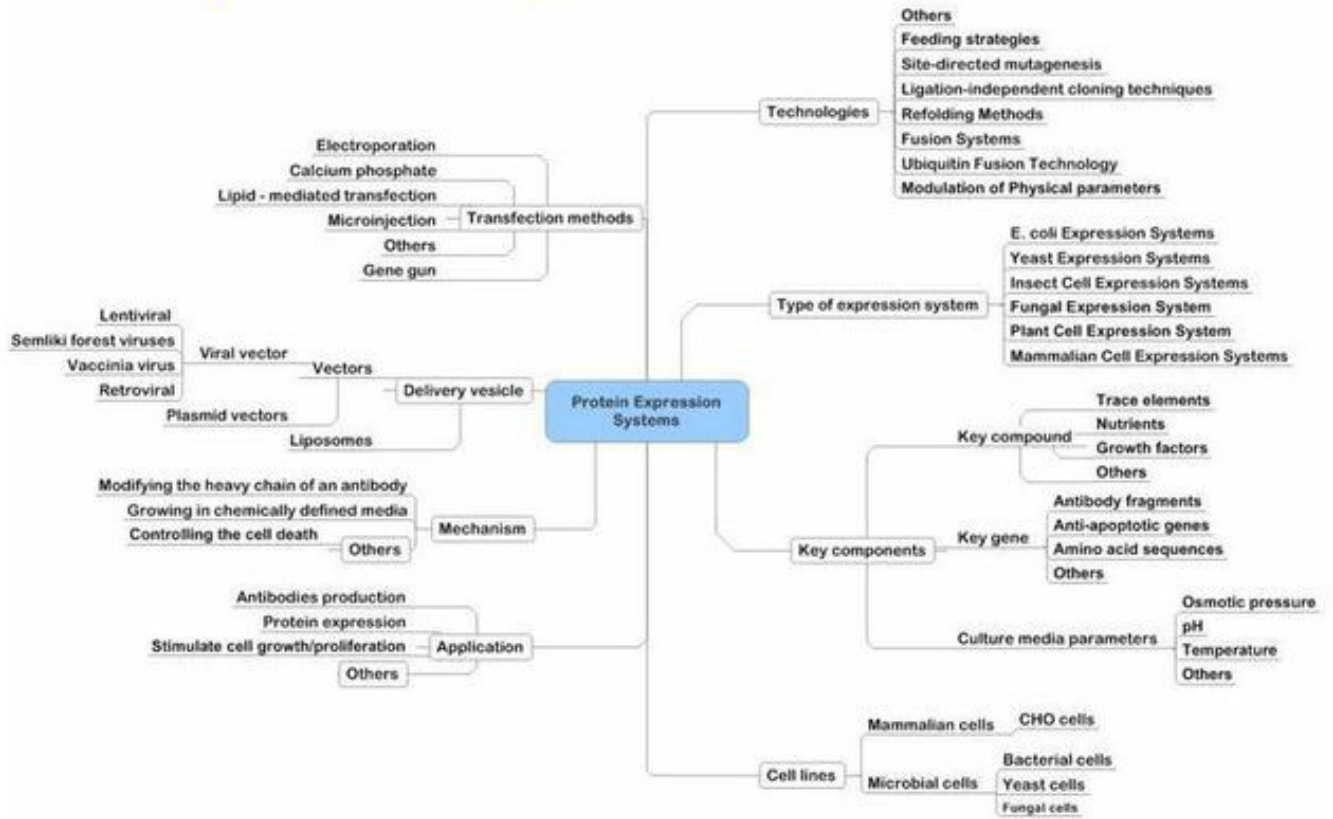
Search Strings, Hits & Scope:

- **Search I**
 - (Life) AND (Insurance OR Reinsurance OR Polic* OR Annuit*) - 532 hits
 - Search scope – Title, Abstract & Claims, Date - 2000 till date
 - Databases: US, EP, WO, JP, DE, GB and FR (common for all)
- **Search II**
 - (computer) and (Insurance OR Reinsurance) and (Polic* OR Annuit*) – 511 hits
 - Search scope – Title, Abstract & Claims, Date 1991 till date
- **Search III**
 - (Insurance OR Reinsurance OR polic* or Annuit*) limited by assignee (Insurance OR Bank) – 345 hits
 - Search scope – Title, Abstract & Claims, Date – 1991 till date – 345 hits

Total # of records - Search I + Search II + Search III = 1239 (excluding duplicates and family members but includes off-target)

Note: All search hits exclude family members and duplicate patent records

Creating taxonomy



Creating IP maps

Home | All Workfiles | All T... | Mohammed Abdul Jaleel (M)ABDUL

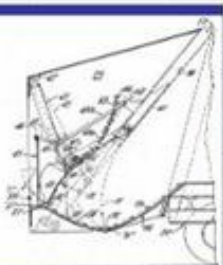
Mouseover displaying original claim elements

IPMap

Patent/Assignee	Door type ?	Opening/closing mechanism ?	Protective device - ?	Movement of cover ?	Fixing of cover ?	Position of cover ?	Prevent trapping or crushing ?
US3754786 Hedstrom Company	Playseat	Tilting or pivoting door (200) which comprises as partial elements a frame (1), a door panel (2) which is held therein so as to be pivotable or tiltable and particularly movable overhead.	Guard	N/A	Pivoted	Secured between the legs at each pivotal connection	Protect fingers from pinch points
US6053693 Crow River Industries, Inc.,	Lifting wheelchair	Lever arm mechanism	Slide shoe - Not a protective device	Slide shoe slides on lower pivot arm towards vertical channel beam intermediate pivot shaft	Catch pin fitting in slot retains slide shoe	Pivotly connected to link arms 100A and 100B	N/A
US6029585 Osaka Taiyu Co., Ltd.	Lift mechanism	Lever arm mechanism	Safety cover	Safety cover of lever mechanism moves closer to base in course of movement of table along a verticle axis.	Pivoted to intermediate bracket	Attached to an intermediate bracket	N/A
US3799375 Peabody Galion Corporation	Tailgate of ref vehicle					Pivotally mounted at its ends in a pair of levers	Prevents inserting of hand or arm in danger location adjacent the sill Cranking of

Download pdf for review with relevant portion marked

Mouseover displaying bibliographic and image information to be invalidated

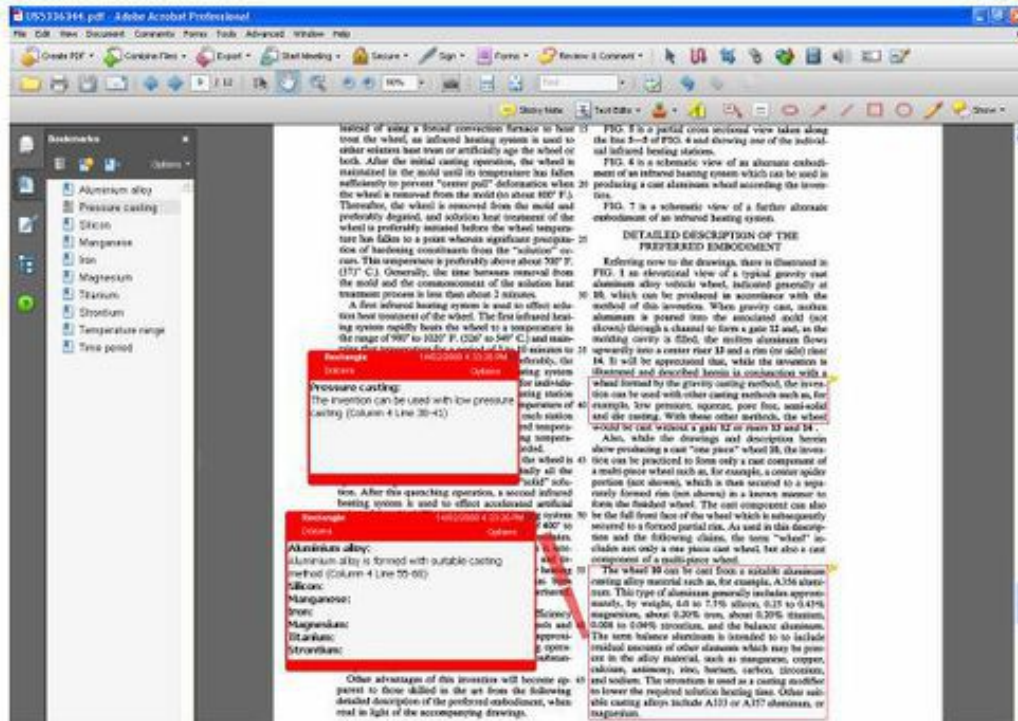


Taxonomy for claim elements to be invalidated

Analyzed information in tabular format for quick comparison with technical detail taxonomy to be invalidated

Mouseover displaying bibliographic and image information to be invalidated

Our pdf marking process indicate our analysis strength & save client's time

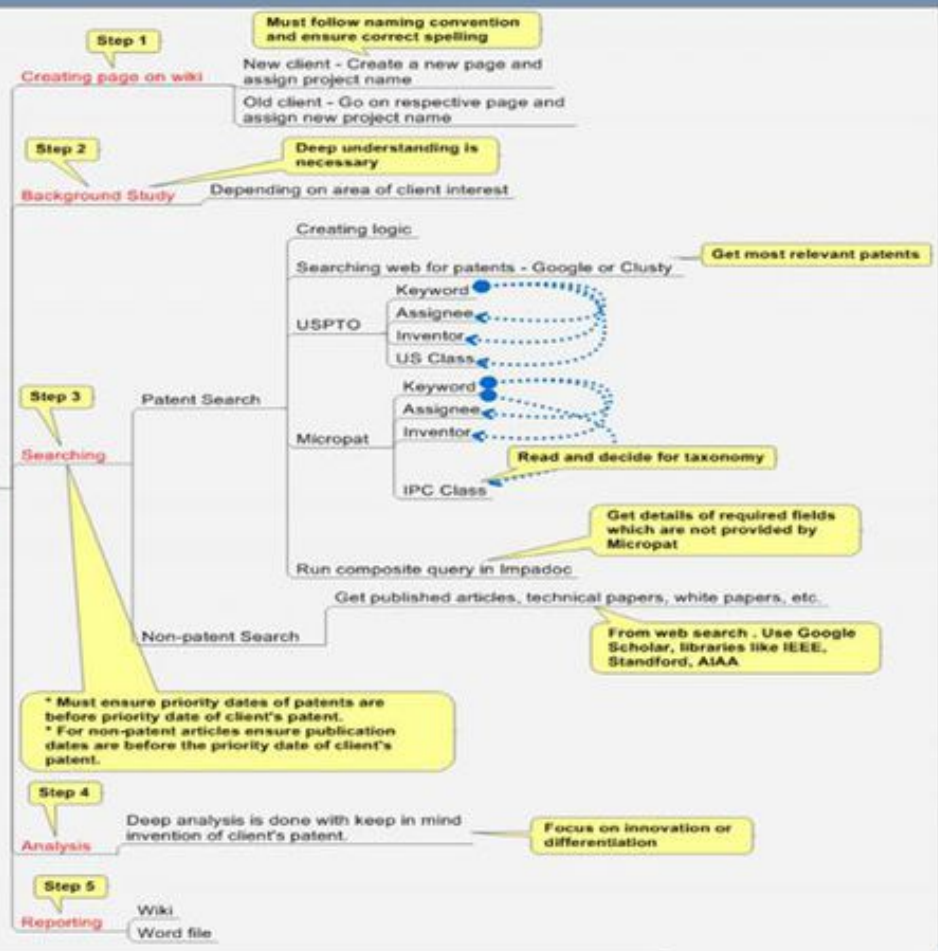


Final report format for prior art search

Dolcera	
US Office 201 A South Delaware St. #506 San Mateo, CA 94401 Phone: +1-650-209-7852 info@dolcera.com www.dolcera.com	India Office B-2-5555/11 (B2), 507, Road #12, Bagga Hills, Hyderabad, India Phone: +91-40-2339980
Search report	
August 01, 2007	
Patent Engineer: Receive date:	
Title: Guiding system	
Search criteria: 1. Positioning of power system 2. Guided mode 3. Vehicle positioning system	
Very Relevant Document (* indicates a XYZ patent/application)	Relevant to criteria
US5758583 - <ul style="list-style-type: none">Power steering mechanism is connected to central pivot (which is on the axle) which actuates simultaneously, through a quadrant, a left-wheel control rod and a right-wheel control rod (Page 3 Line 45-47 & Fig. 7)Self-guided mode (Page 2 Line 5-6)	
Relevant Document (* indicates a Philips patent/application)	Relevant to criteria
EP1324891- <ul style="list-style-type: none">Steering arrangement provides steering of the wheels with tires (Para 0020 & Fig 3)Automatically guided vehicle (Para 0015)	
Technical background (* indicates a xyz patent/application)	Relevant to criteria
US5540298 - <ul style="list-style-type: none">Power steering is provided on the rod to steer left and right (front) wheels (Page 12 Line 15-19)	



Prior Art Search – Novelty



- Notes:**
1. Focus on differentiation or Innovation
 2. Document all search string
 3. Do not delete any records (even if off-target)

Invalidation Procedure:

- We take the Examination search report from the EP register or from US pair to see if the patents cited by the examiner are cited as X or Y attack
- **X-attack:** A single document is used to invalidate each and every independent claim of a patent.
- **Y-attack:** Multiple/combination of documents are used to invalidate each and every independent claim of a patent.
- Class search is performed using ECLA, US Class, F-term(Japanese Patent search) and IPC.
- Search strategy is built using the classes and Keywords.
- Search is done using various databases like Micropat, Q-pat, SIP.
- The retrieved patents are analyzed keeping in view the independent claim elements of the invalidating patent and represented according to relevancy i.e High ,Low or medium relevancy

- A claim comparison chart is prepared using patents cited by the examiner with that of the Invalidating patent and elements from the Independent claim of the patent to be invalidated. These patents guide us for further invalidating the patent and also gives us the idea of which elements from the X OR Y attack are not present in the cited patents.
- The Independent claim comparison chart is as follows.(X- Represent elements are present in the patent)

S.No.	Patent/Publication No.	Precipitated Silica	BET surface area(m ² /g)	CTAB surface area(m ² /g)	Alumina	Water glass (Sodium silicate)	Sulfuric acid	Temperature range	pH range
1	EP983966A1	X	80-180 m ² /g	80-139 m ² /g	<5%	X	X	60-95°C	3.98
2	US5800609	X	140-200 m ² /g	140-200 m ² /g	0.35-1.50% by weight	X	X	70-98°C	3 and a 6.5
3	WO/2002/051749	X	110-260 m ² /g	100-250 m ² /g	0.3% by weight	X	X	90-95°C	5.2

